

WHAT GREAT LOOKS LIKE



—  
MODERN  
REFINED  
ELEGANCE

*Innovative bath and shower enclosures available in an array of designs, finishes, and architectural glass options*

Dallas

1312 West Crosby  
Carrollton, TX 75006

Austin

3003 Tom Gary Cove  
Round Rock, TX 78665

[www.waterfallbathenclosures.com](http://www.waterfallbathenclosures.com)



**WATERFALL**  
BATH ENCLOSURES



# WATERFALL BATH ENCLOSURES

Waterfall Bath Enclosures offers a diverse selection of bath and shower enclosures, available in framed, semi-frameless, and heavy glass designs. Each unit is expertly handcrafted to ensure durability and ease of use, and is available in a range of finishes and architectural glass patterns.

We incorporate innovative and functional features that blend aesthetics with reliability. Our commitment to meticulous design, premium materials, and superior functionality ensures that our shower doors are built to last.

Discover why homeowners, builders, and remodelers trust Waterfall Bath Enclosures for premium, high-performance bathroom solutions.





**MODEL 11**  
Heavy Glass Slider  
Oil-Rubbed Bronze Finish  
3/8" Clear Glass  
Featured on page 30

# CONTENT

## Sliders 06

- 34 Semi-Frameless Slider for Bathtubs
- 35 Semi-Frameless Slider for Showers

## Deluxe Sliders 10

- Harmony Heavy Glass Slider
- Symmetry Heavy Glass Slider

## Pivot + Hinge 14

- 30C Semi-Frameless Continuous Hinge
- 30D Semi-Frameless Continuous Hinge
- 70 Framed Continuous Hinge

## Stalls 20

- 01 Door & In-Line Panel
- Vista Door & 3/8" In-Line Panel

## Heavy Glass 24

- Doors, Panels, & Sidelites
- GridView Heavy Glass Door
- 10 Heavy Glass Slider for Bathtubs
- 11 Heavy Glass Slider for Showers

## Hardware 32

- Hinges
- Clips & Pulls
- Miscellaneous

## About 38

Waterfall Capabilities



# SLIDERS



## MODEL 34D Sliding Enclosure for Bathtubs

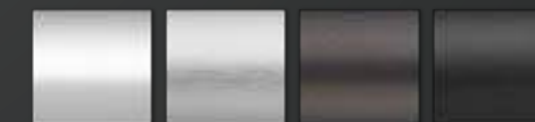
The 34D semi-frameless slider for bathtubs blends modern styling and functionality with a sleek "Euro" style round header and through-the-glass tubular towel bars. Two frameless tempered glass panels are supported by sealed heavy-duty ball bearing rollers providing smooth and effortless operation. With a variety of design options and custom fabrication available, the 34D offers both style and functionality tailored to individual preferences.

Heavy Duty Rollers with Glass Mounted Brackets

1/4" Tempered Glass with Flat Polished Edges

Round "Euro" Style Header

Tubular Towel Bars Mounted Through the Glass



Polished  
Silver

Brushed  
Nickel

Oil-Rubbed  
Bronze

Matte  
Black



# SLIDERS



## MODEL 35D Sliding Enclosure for Showers

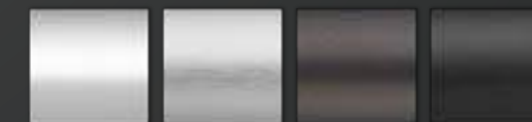
The 35D semi-frameless shower slider combines contemporary design and practicality, featuring a stylish "Euro" round header and tubular towel bars integrated through the glass. It includes two frameless tempered glass panels supported by sealed heavy-duty ball bearing rollers, ensuring smooth and effortless operation. With numerous design options and the ability for custom fabrication, the 35D is designed to cater to individual preferences by offering both style and functionality. Available in widths up to 60" and standard heights up to 78". Suitable for fiberglass installation.

Heavy Duty Rollers with Glass Mounted Brackets

1/4" Tempered Glass with Flat Polished Edges

Round "Euro" Style Header

Tubular Towel Bars Mounted Through the Glass



Polished  
Silver

Brushed  
Nickel

Oil-Rubbed  
Bronze

Matte  
Black



# DELUXE SLIDERS



## HARMONY Heavy Glass Slider for Showers

The clean, sleek lines of the Harmony provide a minimalist yet visually appealing look. Four oversized rollers operate seamlessly on a heavy-duty stainless steel tube. This perfectly balanced precision roller system leads the industry in functional design creating a truly open and contemporary appearance. The Harmony maximizes floor space with its sliding door and stationary panel providing ample access in applications with toilet or vanity obstructions. Harmony also lends itself to countless custom configurations including one or two 90 degree returns, pony walls, notched panels, and out-of-square conditions. Exposed adjustable bumpers add to the sleek styling and allow you to set the stopping points of the sliding door. Choose from a recessed pull or 8" ladder pull.

3/8" Tempered Glass with Flat Polished Edges

Heavy Duty Precision Rollers

Optional Thru-the-Glass Return Panel Mount

8" Ladder Pull or Recessed Pull



Polished Silver

Brushed Nickel

Oil-Rubbed Bronze

Matte Black

Champagne



# DELUXE SLIDERS



## SYMMETRY Heavy Glass Bypass Slider

The Symmetry features 3/8" sliding panels that glide inside two heavy-duty stainless steel tubes. This setup reduces the footprint to just 2-5/16" (much smaller than typical doors where panels extend beyond the header), making it suitable for installation on tubs and showers with narrow curbs. Symmetry simplifies installation by removing wall jambs and replacing them with idle rollers instead of a traditional curb.

3/8" Tempered Glass with Flat Polished Edges

Heavy Duty Rollers with Glass Mounted Brackets

Adjustable Panels for Easy Installation

Tubular Towel Bars or Recessed Pull



Polished  
Silver

Brushed  
Nickel

Matte  
Black



# PIVOT + HINGE



## MODEL 30C Semi-Frameless Continuous Hinge Door

The Model 30C features sleek frameless glass panels designed for showers up to 36" wide. The unique continuous hinge holds the tempered glass panel securely in place while a magnetic closure integrated into a clamp-on handle keeps the door closed. Adjustable jambs accommodate uneven walls, ensuring proper alignment. A clear acrylic drip along the bottom and a vinyl seal in the strike jamb maintain the Model 30C's watertight integrity.

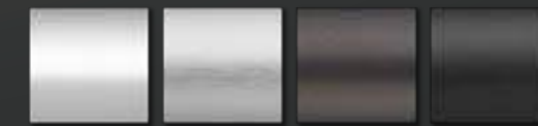
1/4" Tempered Glass with Flat Polished Edges

Full-Length Continuous Hinge

Clamp-On Handle with Magnetic Closure

Low-Profile Curb for Maximum Waterproofing

Adjustable Jambs for Precision Fit



Polished  
Silver

Brushed  
Nickel

Oil-Rubbed  
Bronze

Matte  
Black



# PIVOT + HINGE



## MODEL 30D Semi-Frameless Continuous Hinge Door

The Model 39D continuous hinge door brings clean lines and contemporary styling to showers up to 36" in width. The 1/4" tempered glass features polished edges and a thru-the-glass pull handle for clean styling. This semi-frameless door opens effortlessly on a unique continuous hinge design and closes securely with a magnetic closure. A clear acrylic drip across the bottom of the door and a clear vinyl seal in the strike jamb keep the Model 39D watertight. Suitable for fiberglass installation.

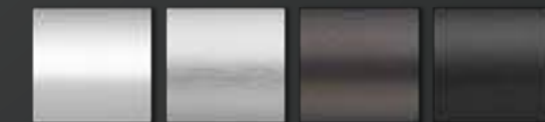
1/4" Tempered Glass with Flat Polished Edges

Full-Length Continuous Hinge

Thru-the-Glass Handle with Magnetic Closure

Adjustable Jamb's for Precision Fit

Low-Profile Curb for Maximum Waterproofing



Polished  
Silver

Brushed  
Nickel

Oil-Rubbed  
Bronze

Matte  
Black



# PIVOT + HINGE



## MODEL 70 Framed Continuous Hinge Door

The Model 70 framed continuous hinge door brings both form and function to showers requiring maximum waterproofing and durability. The fully framed tempered glass panel is supported by a continuous hinge built directly into the pivot rail and jamb providing quiet and efficient functionality. The Model 70 fits openings from 24" to 36" and is adjustable by  $-1/2"$  to  $+3/4"$  to compensate for out-of-plumb wall conditions. Magnetic vinyl in the strike jamb and the strike rail keeps the door securely closed and watertight. The unique drip rail seals below the door when closed and channels water from the surface of the glass back into the shower when the door is opened.

---

Full-Length Continuous Hinge

---

Fully Framed for Maximum Rigidity

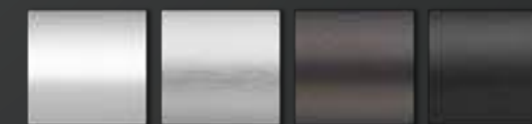
---

Adjustable Jamb for Precision Fit

---

Full-Length Magnetic Closure

---



Polished  
Silver

Brushed  
Nickel

Oil-Rubbed  
Bronze

Matte  
Black



# STALLS



## MODEL 01 Door & Panel for Showers

The 01 door & panel series delivers a tailored appearance at an affordable price, combining a standard door with a custom fabricated sidelite. Select from framed or semi-frameless door options to enhance the aesthetic of showers up to 60" in width. Customizable sidelite choices cater to different shapes and sizes accommodating shower seats and buttresses. Precision overlapping / telescoping joints ensure sleek contours and superior waterproofing.

Options for Buttress (03B) & Corner Installation (04)

Framed or Semi-Frameless Door Options

1/4" Tempered Glass Panels

Stock Door Available with Custom Sidelite



# STALLS



## VISTA 1/4" Door & 3/8" Panel for Showers

The Vista door & panel enclosure combines a standard 1/4" semi-frameless door with a custom 3/8" heavy glass sidelite, delivering a personalized look at a competitive cost. The all-glass appearance features a headerless design, stylish 6" through-the-glass pull handle, and clear drip system. The 3/8" sidelite can be customized to fit various shapes and sizes, accommodating shower seats and buttresses as needed. Precision overlapping and telescoping joints guarantee smooth lines and excellent waterproofing. Available in widths up to 66" and standard heights up to 80". Suitable for fiberglass installation.

---

Stock 1/4" Door, Custom 3/8" Sidelite

---

Semi-Frameless 39C or 39D Door

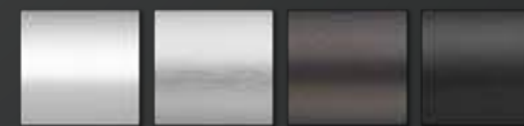
---

6" or 8" Thru-the-Glass Tubular Handle

---

Suitable for Shower Seats or Buttresses

---



Polished  
Silver

Brushed  
Nickel

Oil-Rubbed  
Bronze

Matte  
Black



# HEAVY GLASS



## HEAVY GLASS Doors, Panels, & Sidelites

Once limited to high-end new construction, Heavy Glass has evolved as the product of choice for builders, homeowners, and remodelers. Waterfall offers a wide variety of 3/8" doors, panels, and hardware suited to meet the structural requirements of installation while satisfying aesthetic demands. We handcraft our own line of hardware with thoughtful details, expert construction, and refined fabrications in 8 designer finishes. Additionally, we stock a large inventory of door lites, transom panels, sidelites, and return panels supported by our expert take-off systems and installation guidelines. Our staff will convert your measurements into a complete package at competitive prices and ensure efficient delivery.

3/8" Tempered Glass with Flat Polished Edges

Doors, Transom Panels, Sidelites, & Return Panels

On-Demand Inventory

Custom Solutions for Specific Needs





# HEAVY GLASS



## GRIDVIEW Heavy Glass Door with Custom Grids

The GridView custom heavy glass series combines a striking grid pattern with sleek industrial design, seamlessly merging modern aesthetics with practicality. Each GridView enclosure is meticulously crafted using advanced techniques to ensure both durability and elegance. The distinctive grid pattern is achieved through a specialized post-tempering process, where the glass is expertly etched and finished with UV-cured paint. This sophisticated process not only provides a smooth, polished look but also significantly enhances the glass's resistance to wear and tear, ensuring lasting beauty and functionality. The GridView design offers a bold, contemporary statement that integrates effortlessly with your bathroom decor, transforming your shower into a focal point of style and durability.

1/4", 3/8", or 1/2" Glass Options

Grid Applied Through Etched UV Paint Process

Grid Sizing & Color Customized to Specifications





# HEAVY GLASS



## MODEL 10 Heavy Glass Slider for Bathtubs

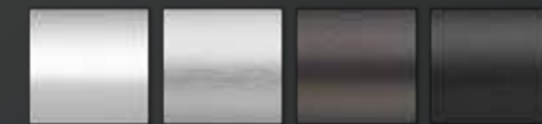
The Model 10 heavy glass frameless slider is the pinnacle of sliding enclosures. Crafted with 3/8" tempered glass for exceptional strength, it features a robust header that enables larger unit dimensions without sacrificing ease of use. Wall jambs are intricately designed for a sleek appearance and optimal waterproofing, complemented by tubular towel bars seamlessly mounted through the glass. For a streamlined aesthetic, the Model 10 offers an option to include concealed header clips, eliminating visible wall jambs altogether.

3/8" Tempered Glass with Flat Polished Edges

Heavy Duty Precision Rollers

Tubular Towel Bars Mounted Through the Glass

Pocketed Wall Jambs



Polished  
Silver

Brushed  
Nickel

Oil-Rubbed  
Bronze

Matte  
Black



# HEAVY GLASS



## MODEL 11 Heavy Glass Slider for Showers

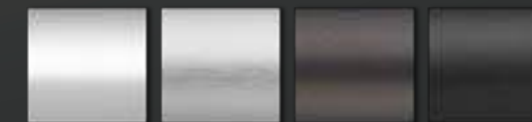
The Model 11 heavy glass frameless slider represents the top-of-the-line in sliding enclosures. Constructed from 3/8" tempered glass for superior durability, it boasts a sturdy header that accommodates larger unit dimensions while ensuring effortless operation. The wall jambs are meticulously crafted to enhance both aesthetics and waterproofing, enhanced by tubular towel bars seamlessly integrated into the glass. To achieve a cleaner look, the Model 11 can be customized with concealed header clips, eliminating visible wall jambs entirely.

3/8" Tempered Glass with Flat Polished Edges

Heavy Duty Precision Rollers

Tubular Towel Bars Mounted Through the Glass

Pocketed Wall Jambs



Polished  
Silver

Brushed  
Nickel

Oil-Rubbed  
Bronze

Matte  
Black



# HINGES



HDH-105-90  
Adjustable HD Wall Mount Hinge



HDOH-105-90  
Adjustable HD Offset Wall Mount Hinge



HDQH-105-180A  
Adjustable HD Square Glass-to-Glass Hinge



HDQH-105-90  
Adjustable HD Wall Mount Hinge



HDQOH-105-90  
Adjustable HD Square Offset Hinge



JQH-102-180  
180° Square Glass-to-Glass Hinge



JQOH-101-90  
Junior Offset Square Hinge



NSDH-104-360  
Floor Mount Pivot Hinge



NSDH-104-360H  
W-644 Header Mount Pivot Hinge



NSQH-104-360  
Square Pivot Hinge



NSQH-104-360H  
Header Mount Square Pivot Hinge



SDH-101-90  
Standard Wall Mount Hinge



SDH-101-90-A  
Adjustable Wall Mount Hinge



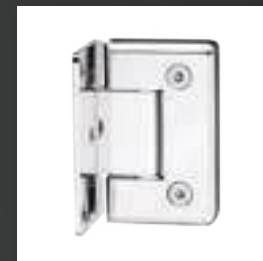
SDH-102-90-A  
90° Adjustable Glass-to-Glass Hinge



SDH-102-135-A  
135° Adjustable Glass-to-Glass Hinge



SDH-102-180-A  
180° Glass-to-Glass Hinge



SDOH-101-90  
Standard Offset Wall Mount Hinge



SDQOH-101-90  
Standard Offset Square Wall Mount Hinge



SQH-101-90  
Standard Wall Mount Hinge



SQH-101-90-A  
Adjustable Wall Mount Hinge

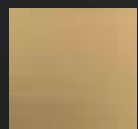


SQH-102-135-A  
135° Adjustable Square Glass-to-Glass Hinge



SQH-102-180-A  
180° Adjustable Square Glass-to-Glass Hinge

# FINISHES



Brushed Bronze (BB)



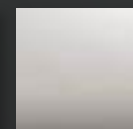
Brushed Nickel (BN)



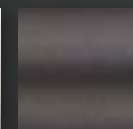
Champagne (CH)



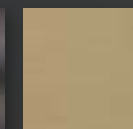
Matte Black (MB)



Polished Nickel (PN)



Oil-Rubbed Bronze (ORB)



Satin Brass (SB)



Polished Silver (SV)



# CLIPS + PULLS



GC-101  
Wall Clip



NGC-104  
90° Glass Clip



NGC-105  
135° Glass Clip



NGC-106  
180° Glass Clip



GOC-101  
Glass Clamp | Small Leg



HCB-135  
135° Header Bracket



HCB-90  
90° Header Bracket



HCB-AJ  
Adjustable Header Bracket



HDC-101  
HD Glass-to-Wall Clip



HDQC-101  
HD Glass-to-Wall Clip | Square



JCQ-101  
Junior Wall Clip | Square



LP6x6 / LP8x8  
Ladder Style Pull Handle



NCB-135  
Notchless 135° Corner Bracket



NCB-90  
Notchless 90° Corner Bracket



NCB-AJ  
Adjustable Corner Bracket



NFB  
Notchless Clip



NSQC-104  
90° Glass Clip | Square



NSQC-105  
135° Glass Clip | Square



NSQC-106  
180° Glass Clip | Square



NWB-90-L  
Notchless Wall Bracket | Left



NWB-90-R  
Notchless Wall Bracket | Right



PB-8 / TB-18  
Handle w/ 18" Towel Bar



PB6 / PB8PULL  
Back-to-Back Pull Handle w/ Washers



SDK-112  
Finger Pull



SQ8X8  
8" Pull Handle | Square



SQC-101  
Wall Clip



SQOC-101  
Glass Clamp | Small Leg | Square



TB18|20|22|24|26|28  
18" - 28" Towel Bar

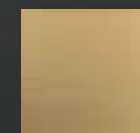


TCGTG-106  
Glass-to-Glass Moveable  
Transom Clamp | Square

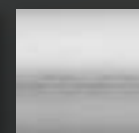


TCGTW-101  
Wall Mount Moveable  
Transom Clamp | Square

## FINISHES



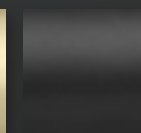
Brushed Bronze  
(BB)



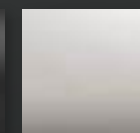
Brushed Nickel  
(BN)



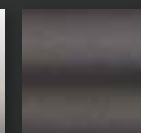
Champagne  
(CH)



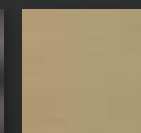
Matte Black  
(MB)



Polished Nickel  
(PN)



Oil-Rubbed Bronze  
(ORB)



Satin Brass  
(SB)



Polished Silver  
(SV)



# MISCELLANEOUS



SILICONE  
Shower & Bath 2400



SO  
Standoff Bracket



W-647  
3/4" Channel



WB-1  
Wall Mounting Bracket

# POLYCARBONATES



PCC-10  
In-Line Panel Seal



P180SDJ  
180" Door Strike / Seal



P501BR  
3/8" Wipe



P912WS  
Drip Vinyl for 1/2" Glass



SDTB  
7/32" Bulb Vinyl



SDTDF  
Double Fin Seal



SDTW  
7/16" Fin Seal



VF Dam Strip  
Clear Polycarbonate



VFP98  
Drip Vinyl for 3/8" Glass





# ABOUT US

Waterfall Bath Enclosures, based in Carrollton, TX, and serving the mid-south, specializes in custom design and shower door fabrication. We assist our clients in crafting tailored bathroom solutions, ensuring each enclosure fits seamlessly into its intended space while reflecting individual style and functional requirements.

We provide an extensive inventory of heavy glass in over 50 sizes, all available for same-day pickup. Complemented by our exclusive line of premium hardware in 8 designer finishes, Waterfall is your premier destination for all heavy glass needs. Our commitment to exceptional design, high-quality materials, and superior functionality extends to our framed and semi-frameless units, available in both KD and fully fabricated options.

Our dedicated customer service team collaborates with you to understand your unique needs and offers expert recommendations to enhance both design and usability. With regional delivery and nationwide shipping options, we streamline the process to minimize wait times and reduce shipping costs.

At Waterfall Bath Enclosures, we are committed to more than just providing outstanding shower doors; we take pride in every aspect of our work. Our passion and precision are evident in every project, driving us to exceed expectations and embody our mantra:

## "What Great Looks Like"



### DELIVERY

Local delivery & pickup in Dallas & Austin metros, nationwide shipping

### CAPABILITIES

Custom tailored fabrication

### INVENTORY

On-demand stock glass & hardware

### CRAFTSMANSHIP

Skill, precision, & unwavering dedication

### DESIGN SERVICES

Expert solutions tailored to meet specific needs

### CUSTOMER SUPPORT

Comprehensive support resources designed to assist and empower our customers





**WATERFALL**  
BATH ENCLOSURES

[www.waterfallbathenclosures.com](http://www.waterfallbathenclosures.com)

[info@waterfallbathenclosures.com](mailto:info@waterfallbathenclosures.com)

877.747.4843